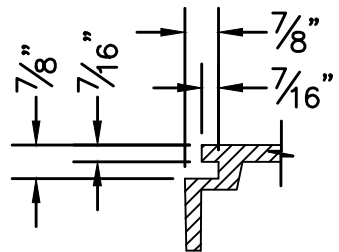
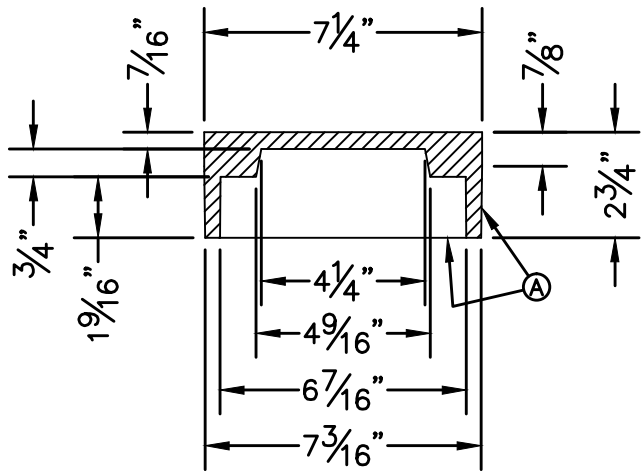


GENERAL NOTES:

1. EACH LID IS CAST WITH TWO PICK POCKETS SET 180° APART.
2. CASTING TO BE SMOOTH & VOID OF AIR HOLES.
3. WEIGHT OF COVER IS 15 LBS.
4. ALL RECLAIMED BONNET BOX COVERS SHALL BE PAINTED PURPLE.

CONSTRUCTION KEY NOTES:

- A. TO BE ROUGH GROUND OF ANY IRREGULARITIES THAT WOULD PREVENT A SNUG FIT.



STANDARD
DETAIL

DATE: 10/27/2004
REV: 3/18/2008

BONNET BOX COVER FOR RECLAIMED
WATER GATE VALVES

N.T.S.



DETAIL No.
401