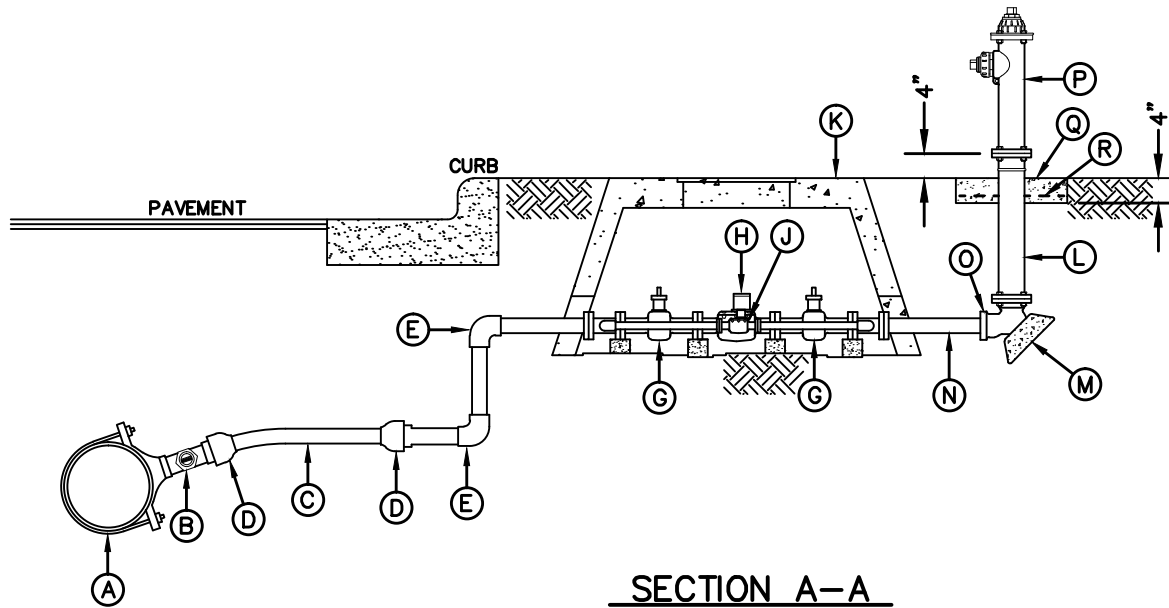


**PLAN VIEW**



**SECTION A-A**

**GENERAL NOTES:**

1. POST TYPE HYDRANT IS A SPECIAL USE HYDRANT AND SHALL NOT BE USED FOR FIRE FIGHTING.
2. ALL RECLAIMED HYDRANTS SHALL BE PAINTED PURPLE.
3. NO OBSTRUCTIONS WILL BE PERMITTED WITHIN 3 FT. IN ALL DIRECTIONS OF WATER HYDRANT. WATER HYDRANT SHALL NOT BE PLACED IN WHEEL CHAIR RAMP OR DRIVEWAY.
4. WATER HYDRANT SHALL BE LOCATED AT THE BEGINNING OF CURB RETURN OR AT THE PROPERTY LINE COMMON TO ADJOINING LOTS, UNLESS OTHERWISE SHOWN ON PLANS. REFER TO DETAIL No. 282 FOR SPECIAL CASES.
5. WHERE SPACE IS LIMITED, HYDRANT SHALL BE INSTALLED IN ACCORDANCE WITH DETAIL No. 282.
6. WHERE NO CURB EXISTS, METER IS TO BE SET NEAR PROPERTY LINE OR AT DESIGNATED LOCATION.
7. ALL PIPING SHALL BE COPPER AND ALL FITTINGS SHALL BE BRONZE UNLESS OTHERWISE SPECIFIED.

**CONSTRUCTION KEY NOTES:**

- A. SERVICE SADDLE
- B. 2" TAP WITH CORPORATION STOP
- C. 2" COPPER PIPE.
- D. UNION
- E. BEND 90°
- F. TEE
- G. 2" GATE VALVE
- H. 2" TURBINE METER
- I. CURB VALVE
- J. 1" BY-PASS METER
- K. METER BOX TYPE "C"
- L. BARREL RISER
- M. THRUST BLOCKING AS REQUIRED
- N. 2" BRASS PIPE, LENGTH AS REQUIRED
- O. 2" HYDRANT ELBOW
- P. POST TYPE HYDRANT, SEE DETAIL NO. 412
- Q. 18"x18"x4" CONCRETE SQUARE PAD TO BE CONSTRUCTED AROUND WATER HYDRANT'S CENTER LINE WHEN NOT LOCATED WITHIN SIDEWALK OR CONCRETE AREA
- R. #10; 6/6 WWF

STANDARD  
DETAIL

DATE: 9/6/2006  
REV:

RECLAIMED WATER HYDRANT  
(POST TYPE) INSTALLATION

N.T.S.



DETAIL No.  
411