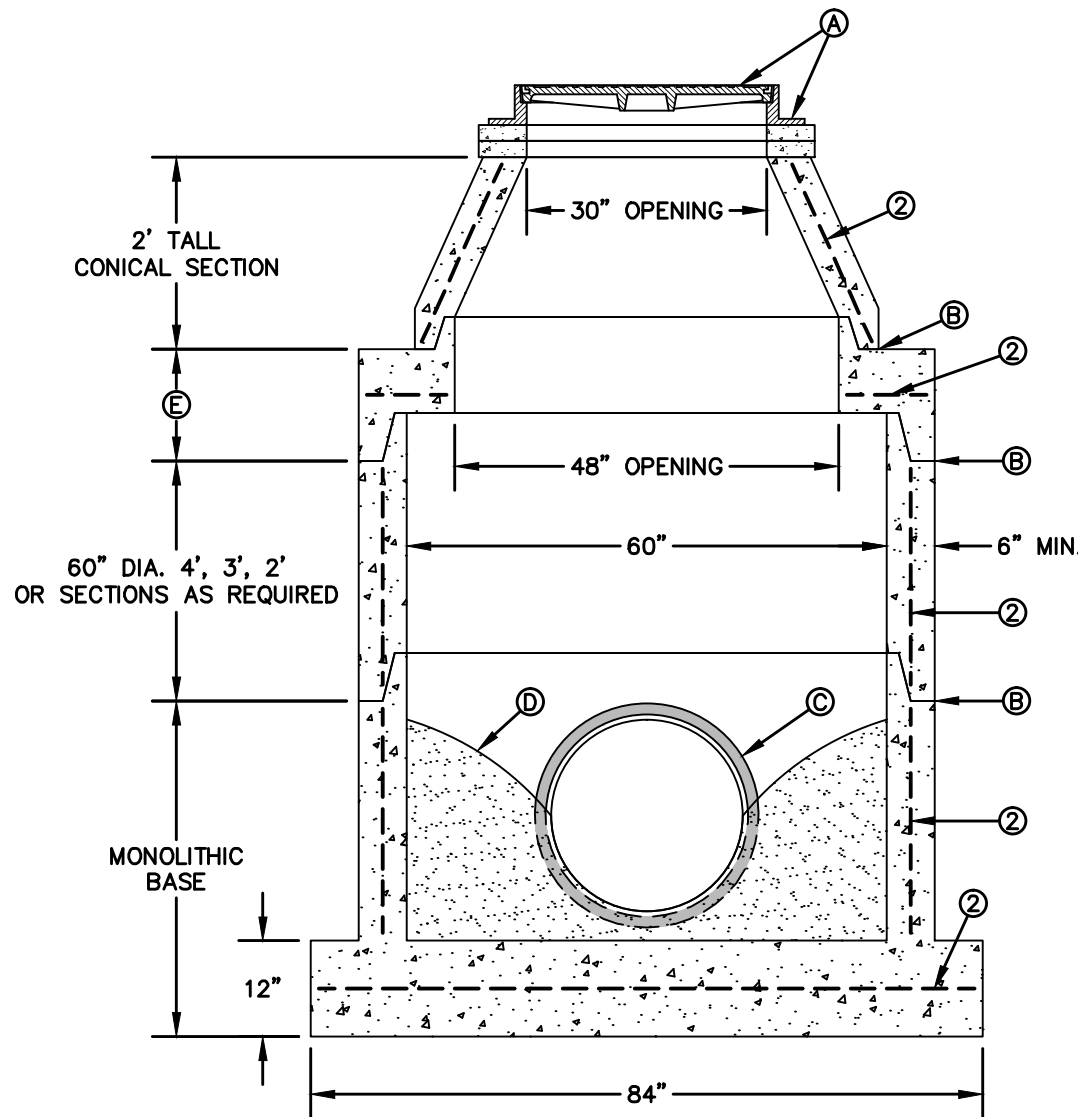


GENERAL NOTES:

1. MANHOLE TYPE "C" SHALL BE USED FOR LINES 24" AND LARGER WITHIN TxDOT ROW. TYPE "C" SHALL BE LARGEST ALLOWABLE MANHOLE SIZE WITHIN TxDOT ROW.
2. PRE-CAST MANHOLE SECTIONS SHALL BE OF REINFORCED CONCRETE CONFORMING TO ASTM C-478 AND SHALL MEET HS-20 LOADING. PROVIDE REINFORCEMENT WITHIN 3" @ OPENINGS OR KNOCKOUTS, OPENINGS (UP TO 8") MADE IN FIELD SHALL BE CORE DRILLED.
3. CEMENT SHALL BE TYPE I-II, PER ASTM C-150, AND MUST CONTAIN A MINIMUM OF 4% FLY ASH OF THE TOTAL MANHOLE WEIGHT.
4. THE BASE & RISER SHALL BE INTEGRALLY CAST. CONCRETE SHALL BE MIN. 28 DAY COMPRESSIVE STRENGTH 4000psi.
5. MANUFACTURER TO PROVIDE LIFTERS OF ADEQUATE SIZE AS NEEDED.
6. THE SUBGRADE UNDER THE BASE SHALL BE COMPACTED TO 95% DENSITY IN ACCORDANCE WITH ASTM D-1557.
7. MANHOLES BELOW GROUNDWATER TO BE EXTERNALLY AND INTERNALLY COATED WITH BITUMINOUS COATING.
8. DEPTHS OVER 14' SHALL HAVE STRENGTHENED WALLS (REFER TO CONTRACT DRAWINGS OR SPECIFICATIONS).

CONSTRUCTION KEY NOTES:

- A. MANHOLE RING AND COVER (SEE DETAILS 377 & 378). SET FRAME AND COVER FLUSH WITH ROADWAY SURFACE OR FINISHED GRADE (SEE DETAIL 185).
- B. ALL JOINTS TO BE TONGUE, GROOVE AND SEALED WITH RAM-NEK OR APPROVED EQUAL.
- C. PIPE OPENINGS/KNOCKOUTS AS REQUIRED TO FIT PIPE SIZE AND SHALL HAVE FLEXIBLE PIPE TO MANHOLE CONNECTORS (COMPRESSION TYPE ASTM-923), "KOR-N-SEAL" OR APPROVED EQUAL.
- D. GROUT AS REQUIRED.
- E. CONCENTRIC LID WITH KEYED TOP, 8" THICK (SEE DETAIL 379-2).



SECTION

STANDARD
DETAIL

DATE: 9/1/2006
REV: 6/22/2009

MANHOLE TYPE "C"

N.T.S.



DETAIL No.
372