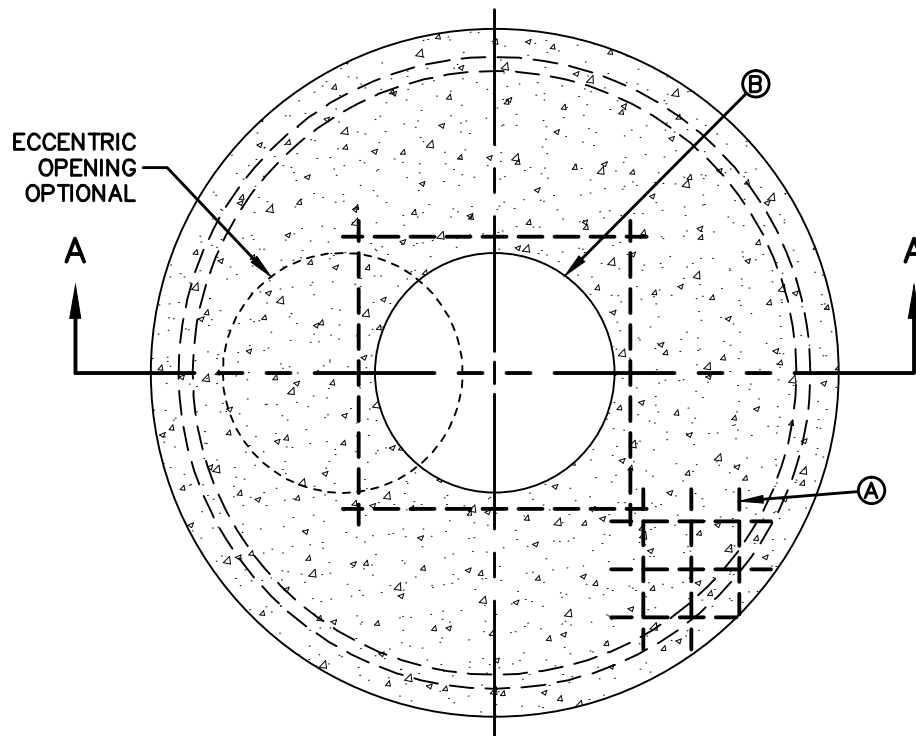


SECTION A-A



MANHOLE LID FOR TYPE "B1"

GENERAL NOTES:

1. FLAT TOP MANHOLE LID SHALL BE OF REINFORCED CONCRETE CONFORMING TO ASTM C-478. CEMENT SHALL BE TYPE I-II, PER ASTM C-150, AND MUST CONTAIN A MINIMUM OF 4% FLY ASH OF THE TOTAL LID WEIGHT.
2. CONCRETE SHALL BE MIN. 28 DAY COMPRESSIVE STRENGTH 4000psi.
3. MANUFACTURER TO PROVIDE LIFTERS OF ADEQUATE SIZE AS NEEDED.
4. REINFORCING SHALL MEET A.S.T.M. C478-87 AND TRAFFIC LOADING (HS-20).
5. RING & COVER OR SPECIAL LIDS TO MEET REQUIREMENTS, MAY BE CAST IN PLACE.

CONSTRUCTION KEY NOTES:

- A. #5 REBAR 6" O.C./E.W.
- B. 30" OPENING, SIZE TO ACCOMMODATE MANHOLE RING (SEE DETAIL 377). OPTIONAL PLACEMENT OF OPENING MAY BE CONCENTRIC (BOLD) OR ECCENTRIC (DASHED).

STANDARD
DETAIL

DATE: 11/1992
REV: 2/21/2011

MANHOLE ECCENTRIC/CONCENTRIC CONCRETE LID
FOR TYPE "B1" MANHOLE

N.T.S.



DETAIL No.
379-1