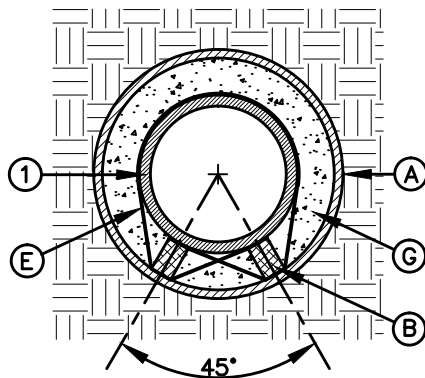


SIDE VIEW



SECTION A-A

**GENERAL NOTES:**

1. INSTALLATION FOR APPROVED CARRIER PIPE, 16" DIAMETER AND SMALLER.
  2. CASING SHALL BE INSTALLED USING EITHER JACKING, BORING OR TUNNELING METHODS FROM THE END WHICH CREATES A MINIMUM OF ACCESS AND RELOCATION PROBLEMS.
  3. PRECAUTIONARY OUTLET (6") WITH BONNET BOX AND COVER SHALL BE USED WHEN REQUIRED BY OTHER GOVERNING AGENCIES.
- NOTE:** PRECAUTIONARY OUTLET MAY ONLY BE USED WHEN ANNULAR SPACE IS FILLED WITH SAND.

**CONSTRUCTION KEY NOTES:**

- A. STEEL CASING (MINIMUM YIELD STRENGTH 36000 PSI) OR REINFORCED CONCRETE PIPE ASTM C-76, SIZE AND LENGTH OF CASING PIPE AS SPECIFIED.
  - B. TWO SKIDS MADE OF HARDWOOD OR OTHER SUITABLE MATERIAL Banded TO EACH JOINT OF PIPE.
  - C. LENGTH OF SKID SHALL BE EQUAL TO 2/3 OF THE LENGTH OF STRAIGHT PIPE.
  - D. SKIDS SHALL BE OF SUFFICIENT DIMENSION TO ALLOW BELL OF PIPE TO CLEAR CASING PIPE BY AT LEAST 1/2".
  - E. STEEL BAND SHALL BE USED TO SECURE SKIDS TO CARRIER PIPE. A MINIMUM OF 3 BANDS PER JOINT IS REQUIRED.
  - F. END SHALL BE SEALED WITH BRICK AND MORTAR, BULKHEAD AND GROUT, OR WITH SYNTHETIC RUBBER SEAL, AS SPECIFIED.
  - G. ANNULAR SPACE SHALL BE FILLED WITH APPROVED GROUT OR SAND.
- NOTE:** GROUT SHALL NOT BE CONSIDERED AS A STRUCTURAL ELEMENT OF THE CASING/CARRIER PIPE SYSTEM.
- H. BONNET BOX AND COVER (SEE DETAILS 268, 269-1 & 269-2) SET FRAME AND COVER FLUSH WITH ROADWAY SURFACE OR FINISHED GRADE (SEE DETAIL 260).

STANDARD  
DETAIL

DATE: 3/1994  
REV: 8/11/2009

CARRIER PIPE INSTALLATION  
IN ANNULAR FILLED CASING PIPE

N.T.S.



DETAIL No.  
181