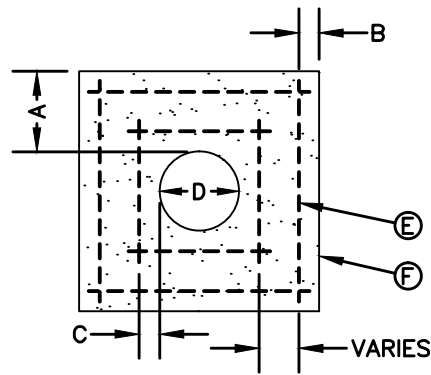
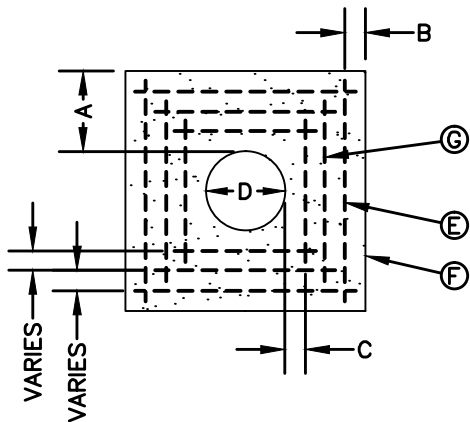


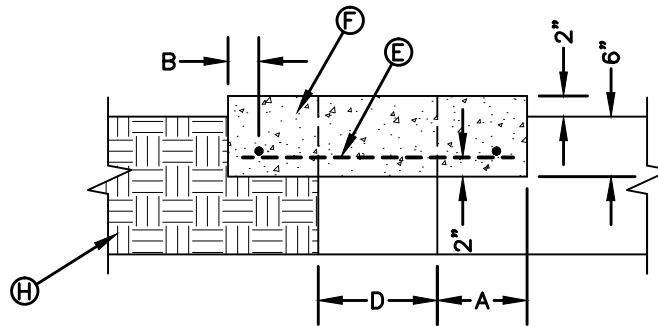
PLAN VIEW - SINGLE REBAR



PLAN VIEW - TWO REBARS



PLAN VIEW - THREE REBARS



SECTION VIEW

GENERAL NOTES:

1. THE CONCRETE APRON SHOULD BE CAST IN-PLACE CONCRETE. (MINIMUM 28 DAY COMPRESSIVE STRENGTH 4000 PSI. HIGH EARLY CONCRETE IS REQUIRED)
2. TOPS OF CONCRETE APRON SHALL BE FLUSH WITH ROADWAY SURFACE OR FINISHED GRADE UNLESS OTHERWISE SPECIFIED BY THE ENGINEER.
3. PROVIDE A MINIMUM OF 1 1/2" OF CONCRETE COVER FOR ALL REINFORCEMENT STEEL.
4. REINFORCING SHALL MEET ASTM C-478 AND TRAFFIC LOADING (HS-20).
5. NO. 3 REBARS SPACED EQUALLY MAY BE LAP TIED OR SQUARE HOOPS.

CONSTRUCTION KEY NOTES:

- E. #3 REINFORCING STEEL TYP.
- F. CONCRETE APRON.
- G. #3 REINFORCING STEEL EQUALLY SPACED.
- H. COMPACTED BACKFILL.

| "D" DIAMETER OF PENETRATION | NUMBER OF #3 REINFORCING STEEL BARS | "A" MINIMUM CONCRETE HORIZONTAL DIMENSION FROM PENETRATION | "B" MINIMUM CLEARANCE FROM EDGE OF CONCRETE APRON TO CENTER OF NEAREST REBAR | "C" MINIMUM CLEARANCE FROM PENETRATION EDGE TO CENTER OF NEAREST REBAR |
|-----------------------------|-------------------------------------|------------------------------------------------------------|------------------------------------------------------------------------------|------------------------------------------------------------------------|
| 0" TO 6" | 1 | 4" | 1½" | 4½" |
| 6.1" TO 18" | 2 | 6" | 1½" | 1½" |
| 18.1" AND OVER | 3 | 8" | 1½" | 1½" |

STANDARD
DETAIL

DATE: 11/6/2008
REV:

CONCRETE APRON
INSTALLATION IN NON PAVED AREAS

N.T.S.



DETAIL No.
184-2