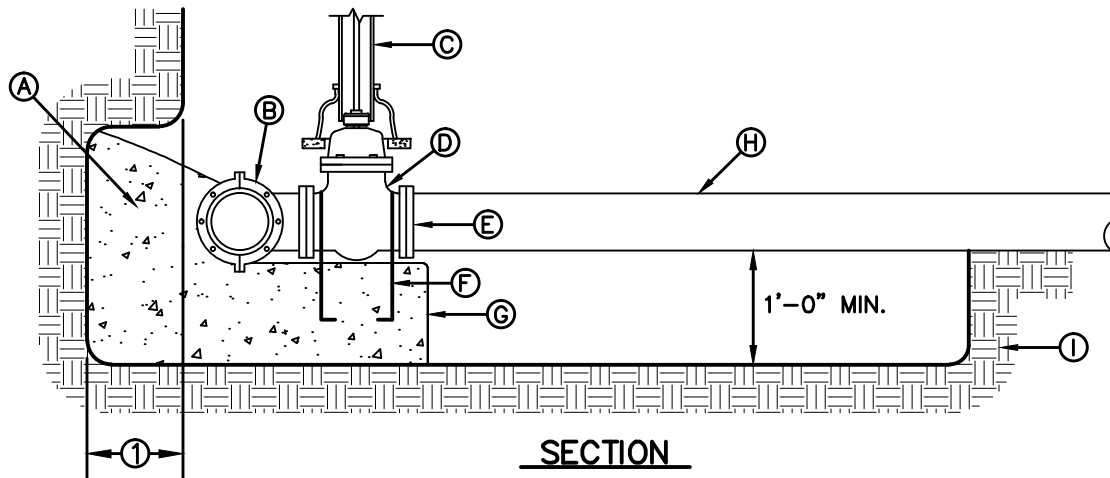


PLAN



SECTION

**GENERAL NOTES:**

1. THRUST BLOCKING SHALL EXTEND TO UNDISTURBED EARTH.
2. TAPPING SLEEVE SHALL BE 18" MINIMUM FROM ANY BELL, COUPLING, VALVE OR FITTING LOCATED ALONG EXISTING WATER LINE TO BE TAPPED.
3. REPLACE EXCAVATED MATERIAL WITH CEMENT STABILIZED BACKFILL PRIOR TO PAVING.
4. JOINTS AND BOLTS SHALL BE CLEAR OF CONCRETE.
5. INSTALL PERMANENT THRUST BLOCKING UNDER VALVE BEFORE TAP IS MADE. JOINTS AND BOLTS TO BE CLEAR OF CONCRETE.

**CONSTRUCTION KEY NOTES:**

- A. CONCRETE THRUST BLOCKING, PER DETAIL 270.
- B. TAPPING SLEEVE.
- C. RISER INSTALLATION, PER DETAIL 260.
- D. TAPPING VALVE.
- E. VALVE ENDS FOR TYPE OF PIPE INSTALLED.
- F. 2-#5 REBAR HAIRPINS, PAINT UNEMBEDDED PORTION OF BARS WITH 2-COATS OF COAL TAR EPOXY, THEN COVER WITH 2" MINIMUM OF CEMENT MORTAR.
- G. CONCRETE VALVE SUPPORT, PER DETAIL 271.
- H. NEW WATER LINE TO BE INSTALLED.
- I. UNDISTURBED EARTH.
- J. EXISTING WATER MAIN TO BE TAPPED.

STANDARD  
DETAIL

DATE: 9/1994  
REV: 8/9/2006

TAPPING SLEEVE AND VALVE INSTALLATION

N.T.S.



DETAIL No.  
266