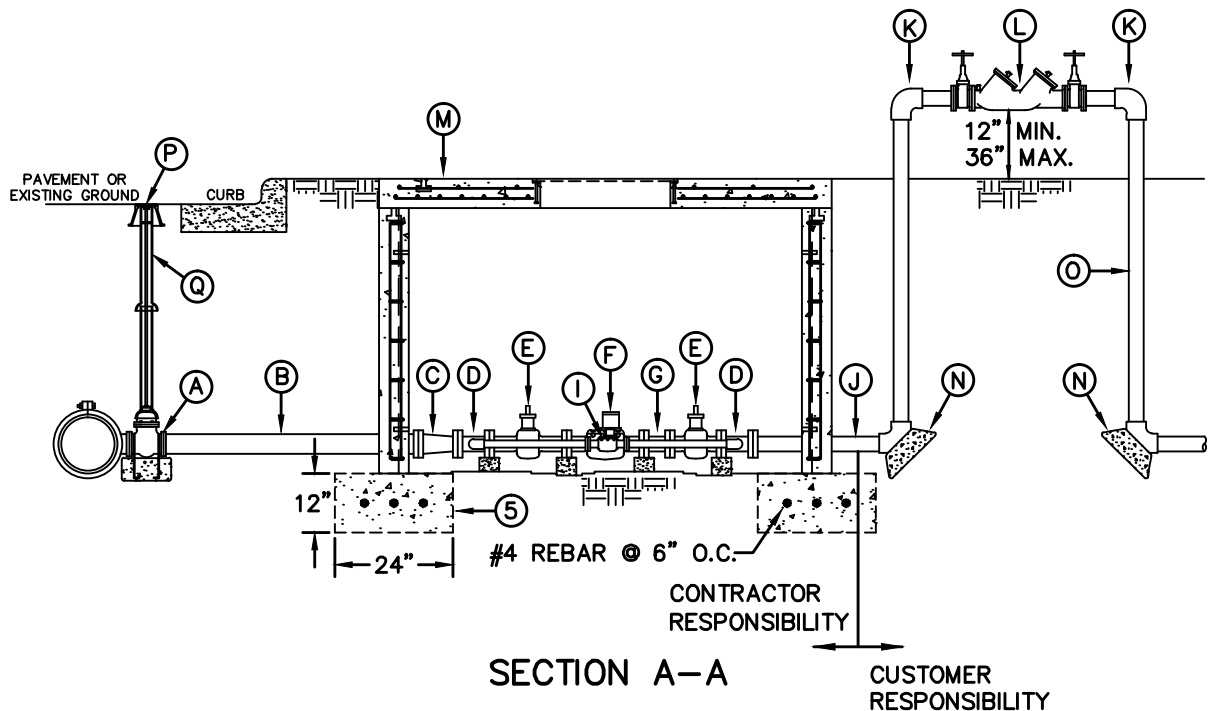


PLAN VIEW



SECTION A-A

GENERAL NOTES:

1. DETAIL SHOWN FOR 3" SERVICE WITH A TAPPING SLEEVE & VALVE CONNECTION TO AN EXISTING LINE (CONNECTION TO A NEW MAINLINE USUALLY WITH GATE VALVE & TEE). INSTALLATION IS SIMILAR FOR LARGER SERVICES EXCEPT FOR SIZE OF PIPE, FITTINGS AND METER.
2. WHERE NO CURB EXISTS, METER IS TO BE SET NEAR PROPERTY LINE OR AT DESIGNATED LOCATION.
3. THE CONTRACTOR SHALL FURNISH AND INSTALL ALL NECESSARY PIPE, FITTINGS, AND METER BOXES REQUIRED. IT SHALL BE THE RESPONSIBILITY OF THE PRIVATE OWNER TO HAVE A CERTIFIED PLUMBER INSTALL A BACKFLOW PREVENTER AND EXTEND SERVICE LINE ON DISCHARGE SIDE OF METER.
4. THE EPWU WILL FURNISH AND INSTALL THE METER.
5. FOOTING REQUIRED.

CONSTRUCTION KEY NOTES:

- A. 4" TAPPING SLEEVE AND VALVE
- B. 4" P.V.C.
- C. 4"x3" REDUCER
- D. 3"x2" TEE
- E. 3" GATE VALVE
- F. 3" METER
- G. 3" TEST PLUG D.I.P.
- H. 2" GATE VALVE
- I. 2" BY-PASS METER
- J. 3" SPOOL D.I.P.
- K. 3" BEND 90°
- L. 3" BACKFLOW PREVENTER
- M. METER BOX TYPE "E" (SEE DETAIL 295-1)
- N. THRUST BLOCKING AS REQUIRED
- O. 3" FLANGED D.I.P. - LENGTH AS REQUIRED
- P. BONNET BOX AND COVER (SEE DETAILS 268, 269-1 & 269-2) SET FRAME AND COVER FLUSH WITH ROADWAY SURFACE OR FINISHED GRADE (SEE DETAIL 260).
- Q. 8" PIPE RISER.

STANDARD
DETAIL

DATE: 4/21/1998
REV: 8/28/2013

SERVICE LINE 3" AND LARGER
INSTALLATION BY CONTRACTOR

N.T.S.



DETAIL No.
290-6