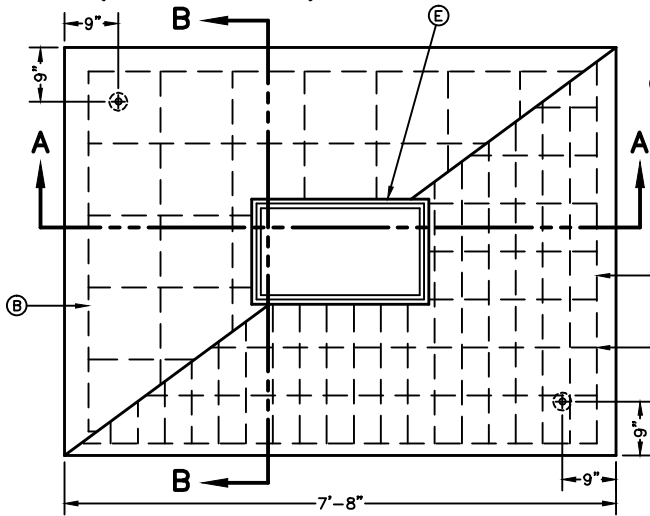
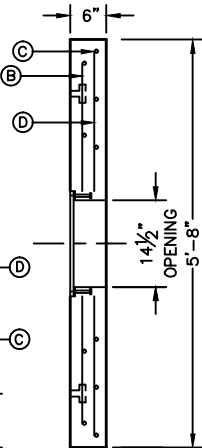


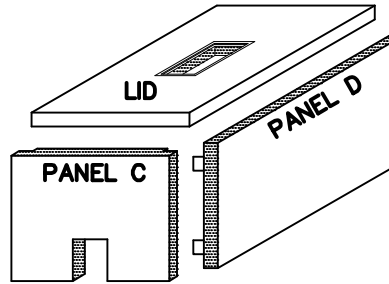
(SECTION A-A) TOP VIEW OF LID



FRONT VIEW OF LID



(SECTION B-B) SIDE VIEW



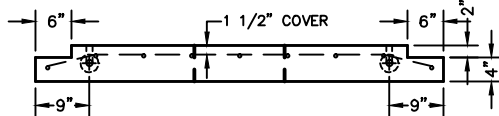
ASSEMBLY

GENERAL NOTES:

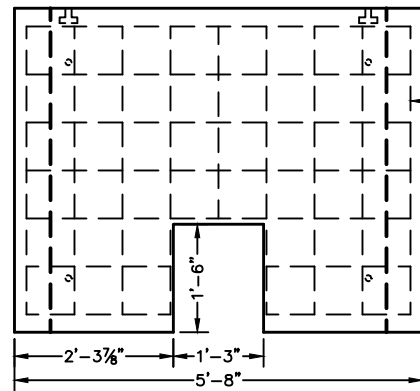
1. WATER CEMENT RATIO 0.5 OR LESS BY WEIGHT OR NOT MORE THAN 5.5 GALLONS PER SACK.
2. REINFORCING SHALL COMPLY WITH ASTM A615 GRADE 60 STEEL $F_y=60000$ PSI.
3. BAR BENDING AND PLACEMENT TO COMPLY WITH LATEST ACI STANDARDS.
4. LIFTERS FOR HANDLING SHALL BE INSTALLED PER MANUFACTURER'S REQUIREMENTS AND RATED TO HANDLE THE WEIGHT.
5. METER BOX SHALL BE MODULAR; CONCRETE TO HAVE A MINIMUM 28 DAYS COMPRESSIVE STRENGTH OF 4000 PSI.

CONSTRUCTION KEY NOTES:

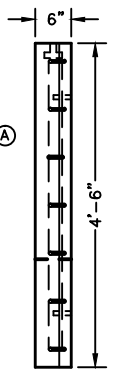
- A. No. 4 REBAR AT 8" ON CENTER, BOTH WAYS.
- B. No. 4 REBAR AT 12" ON CENTER, BOTH WAYS (TOP LAYER).
- C. No. 4 REBAR AT 8" ON CENTER, LONG SPAN (BOTTOM LAYER).
- D. No. 5 REBAR AT 4 1/2" ON CENTER, SHORT SPAN (BOTTOM LAYER).
- E. METER BOX FRAME (SEE DETAIL 302), INTEGRALLY CAST & CENTERED ON LID. SET FRAME SO COVER (SEE DETAIL 302) IS FLUSH WITH TOP SURFACE OF LID.



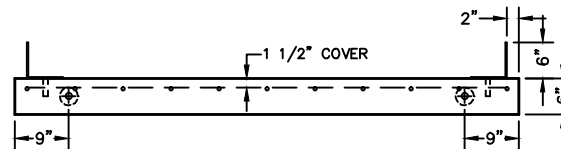
TOP VIEW OF PANEL C



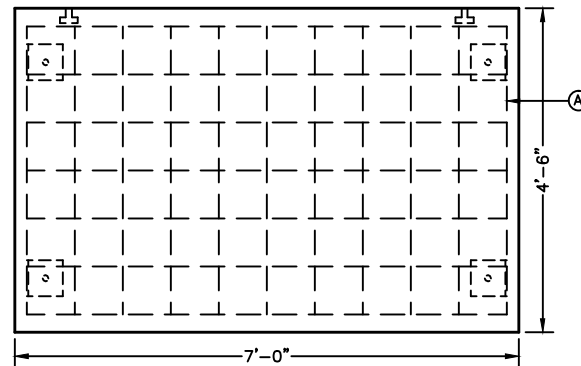
FRONT VIEW OF PANEL C



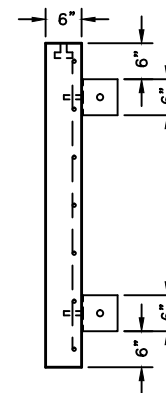
SIDE VIEW



TOP VIEW OF PANEL D



FRONT VIEW OF PANEL D



SIDE VIEW

STANDARD
DETAIL

DATE: 9/1994
REV: 7/20/2009

METER BOX TYPE "E" FOR
3" AND LARGER SERVICE INSTALLATION

N.T.S.



DETAIL No.
295-1