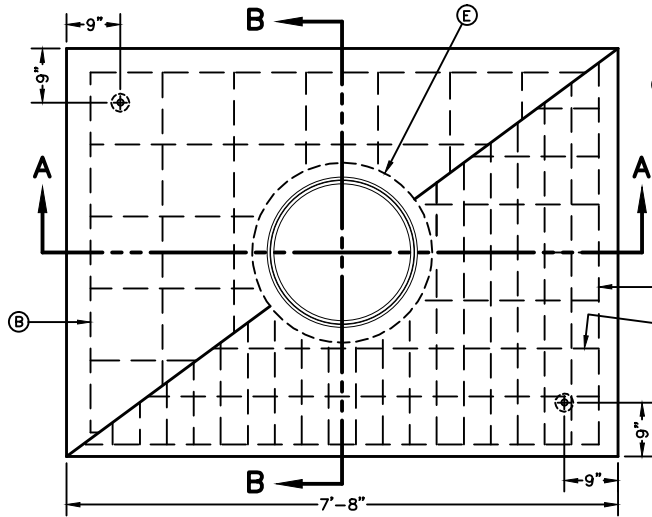
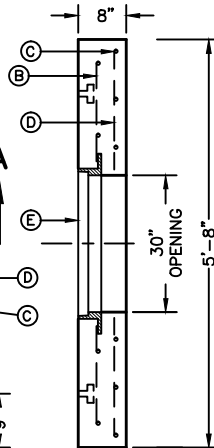


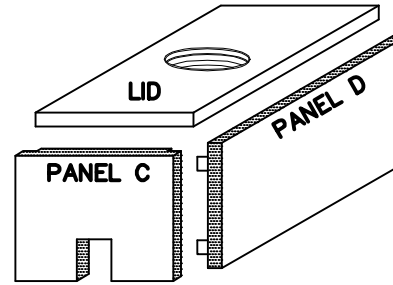
(SECTION A-A) TOP VIEW OF LID



FRONT VIEW OF LID



(SECTION B-B) SIDE VIEW



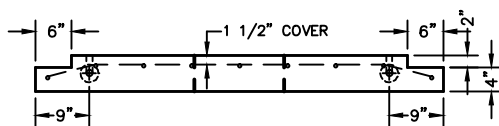
ASSEMBLY

**GENERAL NOTES:**

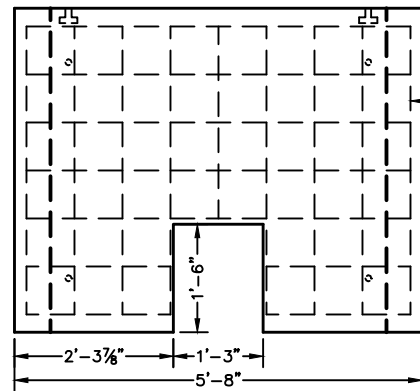
1. WATER CEMENT RATIO 0.5 OR LESS BY WEIGHT OR NOT MORE THAN 5.5 GALLONS PER SACK.
2. REINFORCING SHALL COMPLY WITH ASTM A615 GRADE 60 STEEL  $F_y=60000$  PSI.
3. BAR BENDING AND PLACEMENT TO COMPLY WITH LATEST ACI STANDARDS.
4. LIFTERS FOR HANDLING SHALL BE INSTALLED PER MANUFACTURER'S REQUIREMENTS AND RATED TO HANDLE THE WEIGHT.
5. METER BOX SHALL BE MODULAR; CONCRETE TO HAVE A MINIMUM 28 DAYS COMPRESSIVE STRENGTH OF 4000 PSI.

**CONSTRUCTION KEY NOTES:**

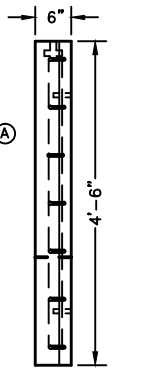
- A. No. 4 REBAR AT 8" ON CENTER, BOTH WAYS.
- B. No. 4 REBAR AT 12" ON CENTER, BOTH WAYS (TOP LAYER).
- C. No. 4 REBAR AT 8" ON CENTER, LONG SPAN (BOTTOM LAYER).
- D. No. 5 REBAR AT 4 1/2" ON CENTER, SHORT SPAN (BOTTOM LAYER).
- E. MANHOLE RING (SEE DETAIL 377), INTEGRALLY CAST & CENTERED ON LID. SET LID SO COVER (SEE DETAIL 378) IS FLUSH WITH TOP SURFACE OF LID.



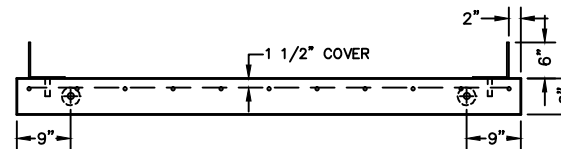
TOP VIEW OF PANEL C



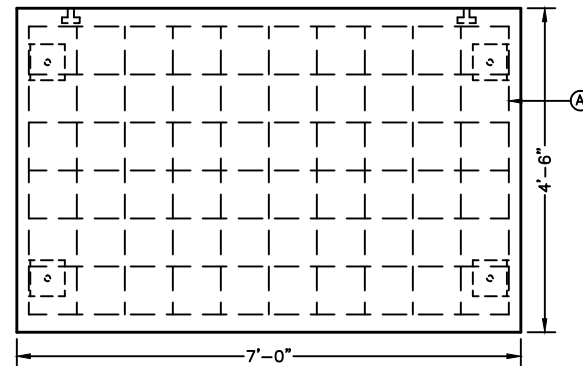
FRONT VIEW OF PANEL C



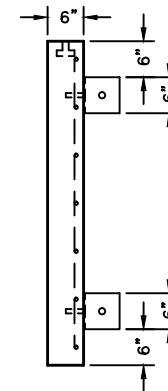
SIDE VIEW



TOP VIEW OF PANEL D



FRONT VIEW OF PANEL D



SIDE VIEW

STANDARD  
DETAIL

DATE: 7/26/2006  
REV: 7/20/2009

METER BOX TYPE "F" FOR 3" AND LARGER  
SERVICE INSTALLATION (H2O LOADING)

N.T.S.



DETAIL No.  
295-2